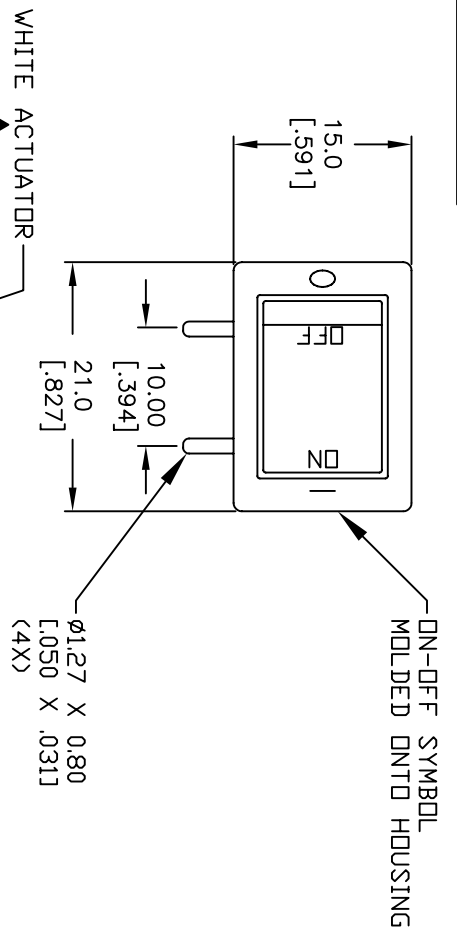
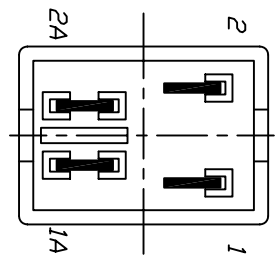
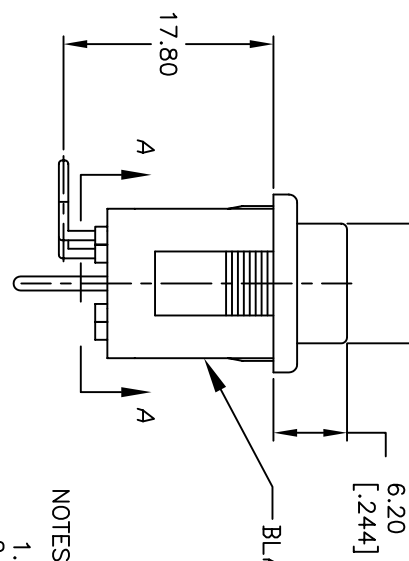
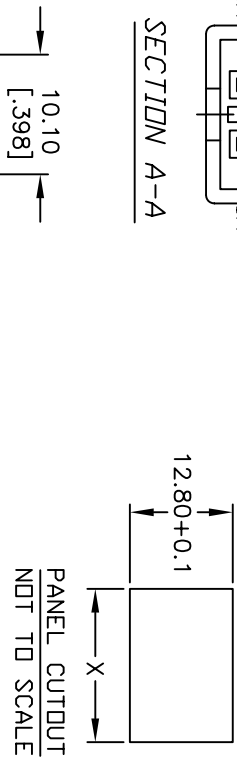


PANEL THICKNESS	X dimension
0.75-1.25 [0.30-.049]	19.3-01 [7.60]
1.25-2.0 [0.49-.079]	19.4-01 [7.64]
2.0-3.0 [0.79-.118]	19.6-01 [7.72]

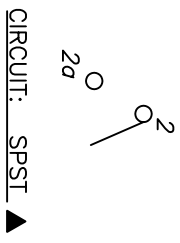


SECTION A-A

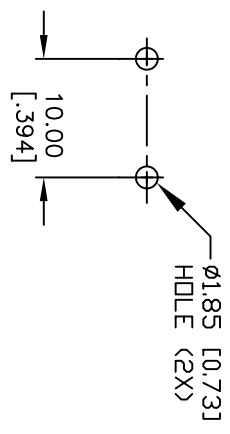


NOTES:

1. ALL DIMENSIONS IN MM [INCH]
2. GENERAL TOLERANCE: X.X=±0.4
X.XX=±0.25
3. RATING: 6A @250VAC;9A @125VAC (UL, CSA, VDE)
4. MATERIAL:
CONTACT SURFACE: Coin Silver, Silver Plate
TERMINAL: Copper Alloy W/ Silver Plate.
5. CONTACT RESISTANCE: 20milliohms TYP. INITIAL
6. INSULATION RESISTANCE: 1000Megohms
7. DIELECTRIC STRENGTH:
>1500V RMS min. @SEA LEVEL
8. MECHANICAL LIFE: 30,000 CYCLES.
9. ELECTRICAL LIFE: 10,000 CYCLES.



CIRCUIT: SPST ▲



RECOMMENDED P.C.B. HOLES



REV. A	ECN No. 15130	NEW RELEASE	8/12/05	PV
DESCRIPTION	THE INFORMATION CONTAINED IN THIS DOCUMENT IS PROPRIETARY TO E-SWITCH AND IS NOT TO BE COPIED OR TRANSFERRED			
DATE	CHKD	TITLE		

SCALE 1.5:1	DATE 8/12/05	DR PV	DWG M400017	REV A
R19734BLKWHTRD				