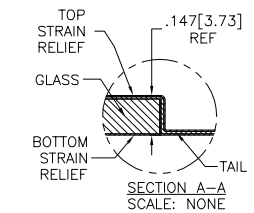
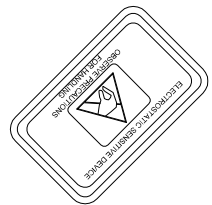
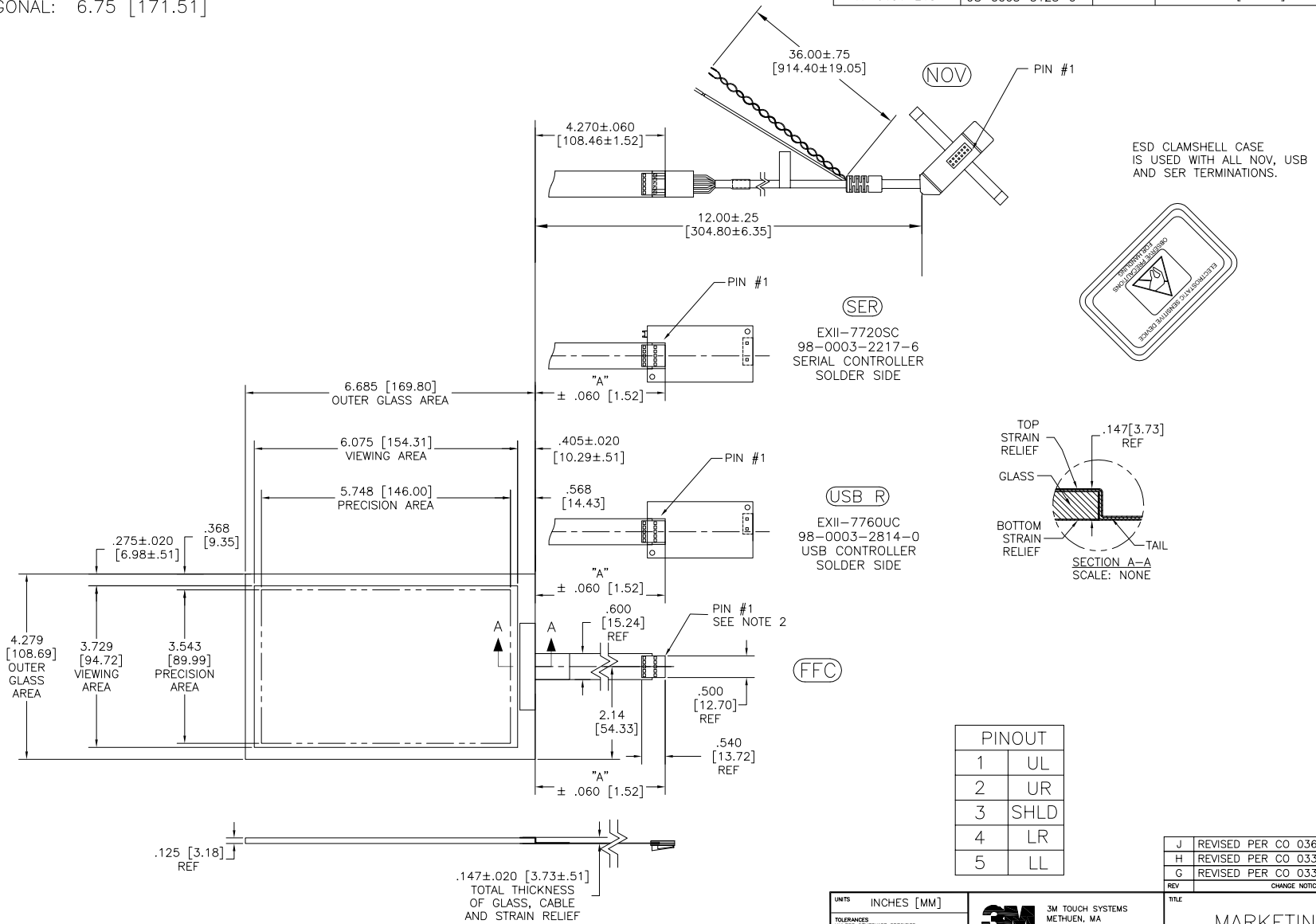


OGA DIAGONAL: 7.94 [201.60]  
 VA DIAGONAL: 7.13 [181.06]  
 PA DIAGONAL: 6.75 [171.51]

TOP LEVEL NUMBER	US NUMBER	TYPE	DIM "A" (TOTAL GLASS TO CONNECTOR)	A/G FINISH	PROD SPEC
17-9131-203	98-0003-2699-5	FFC	4.27" [108.46]	AG500	23655
17-9131-221	98-0003-2701-9	SER	4.27" [108.46]	AG500	23655
17-9131-206	98-0003-3041-9	NOV	SEE DWG	AG500	23655
17-9131-218	98-0003-3125-0	USB R	4.27" [108.46]	AG500	23655



PINOUT	
1	UL
2	UR
3	SHLD
4	LR
5	LL

REV	CHANGE NOTICE	DATE	DRW
J	REVISED PER CO 036256	4/13	SB
H	REVISED PER CO 033533	2/12	SB
G	REVISED PER CO 033709	10/11	SB

- NOTES:
1. WEIGHT OF GLASS IN GRAMS: 141±10%
  2. NICOMATIC HOUSING P/N: OLO5  
 NICOMATIC RECEPTACLES (PINS) MATTE TIN PLATED P/N: 14106-12  
 HOUSING ORIENTED WITH LATCH DOWN

UNITS INCHES [MM]

TOLERANCES UNLESS OTHERWISE SPECIFIED

.X ±  
 .XX ±.03 [.76]  
 .XXX ±.015 [.38]  
 ANGLES ±1°

THIRD ANGLE PROJECTION

DO NOT SCALE DRAWING

SCALE 1 = 1

**3M** 3M TOUCH SYSTEMS  
 METHUEN, MA  
 USA

© COPYRIGHT 2004  
 THIS DOCUMENT IS COPYRIGHTED PROPERTY OF THE  
 3M COMPANY AND MAY NOT BE REPRODUCED  
 WITHOUT 3M WRITTEN PERMISSION OR USED OR  
 DISCLOSED FOR OTHER THAN 3M AUTHORIZED  
 PURPOSES.

DRAWN A.OUELETTE 05/01/06

TITLE

MARKETING DRAWING  
 SCT32NN 7.13"

CAD FORMAT AUTOCAD SHEET 1 OF 1

SIZE C DOCUMENT NO. 31826-MKT REV J