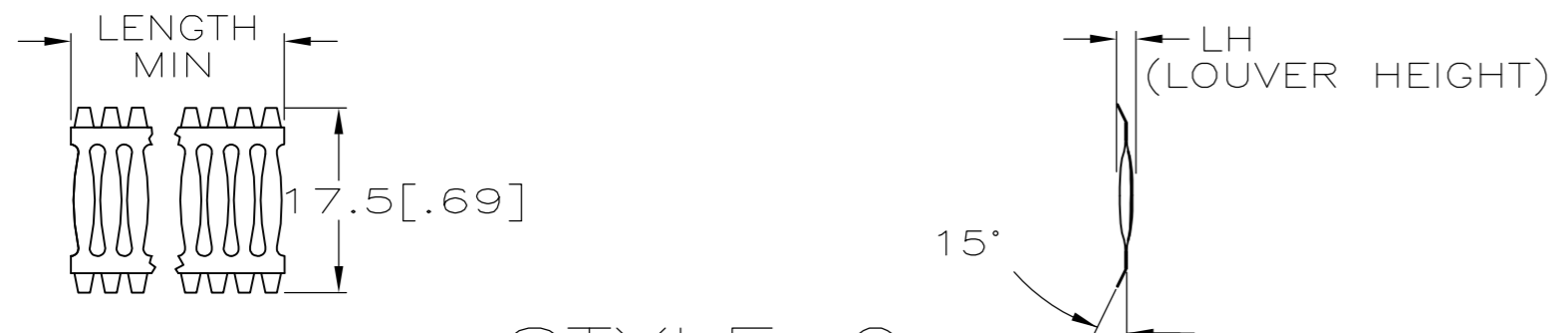
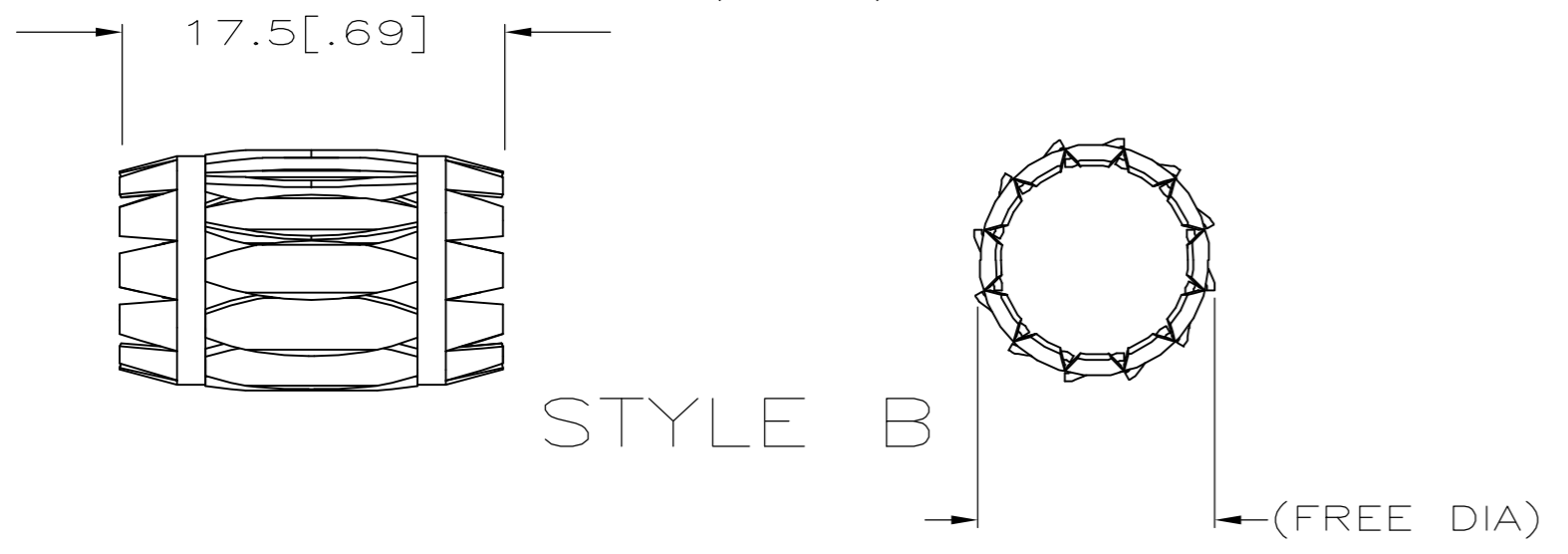


THIS DRAWING IS UNPUBLISHED. RELEASED FOR PUBLICATION
 © COPYRIGHT - By - ALL RIGHTS RESERVED.

REVISIONS							
P	LTR	DESCRIPTION			DATE	DWN	APVD
	S	REVISED PER	ECO-17-013723		21SEP2017	RS	MZ



STYLE C (STRIP)



STYLE B

- FINISH: GOLD PLATE 10uIN MINIMUM.
- FINISH: SILVER PLATE 200 uIN MINIMUM.
- FINISH: NICKEL PLATE 40 uIN MINIMUM.
- FINISH: NICKEL PLATE 100 uIN MINIMUM.
-
-
-
- NESTED AND WELDED 13 AND 14 LOUVERED BAND.
-
-
- PLATING NOTES ARE TO BE INTEREPRETED AS FOLLOWS:
6-8 AS 6 OVER 8.
- PRODUCT IS SOLD BY THE FOOT. MINIMUM ORDER LENGTH IS 3 FEET.

- PRELIMINRY PART NUMBER.
- OBSOLETE PARTS: OBSOLETE CIS STREAMLINING PER D.RENAUD/D.SINISI

(FREE DIA)	STYLE	LH	MAT'L	MATING PIN Ø REF	LENGTH	PLATING	NUM LOUV	MAT'L THK	REF	PART NUMBER	
△14	OBSOLETE	[.72]	B	[.050]	BeCu	19.7[.775]	2-3	23	0.15[.006]	5-192007-4	
	OBSOLETE	[.72]	B	[.052]	BeCu	19.7[.775]	2-3	23	0.20[.008]	5-192007-0	
	OBSOLETE	-	C	[.052]	BeCu	-	NOTE 12	2-3	0.20[.008]	4-192007-9	
	OBSOLETE	[.50]	△8 B	--	BeCu	12.7[.500]	PREPL	△8 27	0.10[.004]	4-192007-8	
	OBSOLETE	[1.42]	B	[.048]	BeCu	38.1[1.500]	UNPL	45	0.08[.003]	4-192007-7	
	OBSOLETE	[1.04]	B	[.048]	BeCu	28.5[1.121]	UNPL	33	0.08[.003]	4-192007-6	
	OBSOLETE	[.82]	B	[.048]	BeCu	22.2[.875]	UNPL	26	0.08[.003]	4-192007-5	
	△14	[1.42]	B	[.050]	BeCu	38.1[1.500]	2-3	45	0.15[.006]	4-192007-4	
	OBSOLETE	[1.71]	B	[.050]	BeCu	44.4[1.750]	2-3	54	0.15[.006]	01305 4-192007-2	
	OBSOLETE	[1.42]	B	[.048]	BeCu	38.1[1.500]	2-3	45	0.08[.003]	01284 4-192007-1	
	OBSOLETE	[1.39]	B	[.050]	BeCu	34.9[1.375]	2-3	44	0.10[.004]	01307 4-192007-0	
	△14	[1.32]	B	[.052]	BeCu	34.9[1.375]	2-3	42	0.20[.008]	01196 3-192007-9	
		[1.32]	B	[.050]	BeCu	34.9[1.375]	2-3	42	0.15[.006]	01309 3-192007-8	
		[1.07]	B	[.050]	BeCu	28.6[1.129]	2-3	34	0.15[.006]	01301 3-192007-7	
△14	OBSOLETE	[1.04]	B	[.048]	BeCu	28.5[1.121]	2-3	33	0.08[.003]	01285 3-192007-6	
	OBSOLETE	[1.00]	B	[.050]	BeCu	27.1[1.068]	2-3	32	0.15[.006]	01263 3-192007-5	
	OBSOLETE								01187	3-192007-4	
	△14	[.94]	B	[.052]	BeCu	25.4[1.000]	2-3	30	0.20[.008]	01178 3-192007-2	
		[.94]	B	[.050]	BeCu	25.4[1.000]	2-3	30	0.15[.006]	01177 3-192007-1	
	OBSOLETE	[.94]	B	[.050]	BeCu	25.4[1.000]	UNPL	30	0.15[.006]	01240 3-192007-0	
	△14	[1.70]	B	[.050]	BeCu	22.2[.875]	2-3	26	0.15[.006]	01170 2-192007-9	
		[.78]	B	[.050]	BeCu	22.2[.875]	2-3	25	0.15[.006]	01169 2-192007-8	
		[.81]	B	[.050]	BeCu	22.2[.875]	2-3	26	0.10[.004]	01276 2-192007-7	
	OBSOLETE	[.81]	B	[.048]	BeCu	22.2[.875]	2-3	26	0.08[.003]	01302 2-192007-6	
	OBSOLETE	[.69]	B	[.052]	BeCu	19[.750]	2-3	22	0.20[.008]	01318 2-192007-5	
	OBSOLETE	[.65]	B	[.050]	BeCu	17.4[.687]	2-3	21	0.15[.006]	01150 2-192007-4	
	△14	[.56]	B	[.050]	BeCu	15.9[.625]	2-3	18	0.15[.006]	01298 2-192007-3	
		[.53]	B	[.052]	BeCu	15.7[.620]	2-3	17	0.20[.008]	01313 2-192007-2	
	OBSOLETE								01146	2-192007-1	
△14	OBSOLETE	--	C	[.050]	BeCu	--	NOTE 12	1-3	--	0.15[.006]	-- 2-192007-0
		[.53]	B	[.050]	BeCu	15.7[.620]	2-3	17	0.15[.006]	01145 1-192007-9	
		[.50]	B	[.050]	BeCu	12.7[.500]	UNPL	17	0.15[.006]	01241 1-192007-8	
		[.50]	B	[.050]	BeCu	12.7[.500]	1-3	14	0.15[.006]	01290 1-192007-7	
		[.50]	B	[.050]	BeCu	12.7[.500]	4	14	0.15[.006]	01291 1-192007-6	
	OBSOLETE	[.50]	B	[.050]	BeCu	12.7[.500]	2-3	14	0.15[.006]	01138 1-192007-4	
		[.50]	B	[.050]	BeCu	12.7[.500]	UNPL	14	0.15[.006]	01235 1-192007-3	
	△14	[.50]	B	[.046]	BeCu	12.7[.500]	UNPL	14	0.08[.003]	01296 1-192007-2	
		[.43]	B	[.050]	BeCu	11.1[.437]	2-3	12	0.15[.006]	01133 1-192007-1	
		[.34]	B	[.050]	BeCu	7.9[.312]	2-3	9	0.15[.006]	01115 1-192007-0	
	OBSOLETE	[.30]	B	[.050]	BeCu	7.9[.312]	2-3	8	0.15[.006]	01119 1-192007-9	
△14	OBSOLETE	--	C	[.050]	BeCu	--	4.90 IN	2-3	49	0.15[.006]	01038 1-192007-8
		--	C	[.050]	BeCu	--	NOTE 12	2-3	--	0.15[.006]	01010 1-192007-7
△14	OBSOLETE	--	C	[.050]	BeCu	--	66 FT	UNPL	--	0.15[.006]	-- 1-192007-6
	OBSOLETE	--	C	[.050]	BeCu	--	66 FT	UNPL	--	0.15[.006]	01019 1-192007-5
	OBSOLETE	--	C	[.050]	BeCu	--	66 FT	2-3	--	0.10[.004]	01016 1-192007-4
△14	OBSOLETE	--	C	[.050]	BeCu	--	66 FT	UNPL	--	0.10[.004]	01018 1-192007-3
	OBSOLETE	--	C	[.046]	BeCu	--	66 FT	2-3	--	0.08[.003]	01000 1-192007-2
	OBSOLETE	--	C	[.046]	BeCu	--	NOTE 12	UNPL	--	0.08[.003]	01024 1-192007-1

THIS DRAWING IS A CONTROLLED DOCUMENT.

DIMENSIONS: mm [INCHES]	TOLERANCES UNLESS OTHERWISE SPECIFIED: 0 PLC ± - 1 PLC ± - 2 PLC ± 0.5[.02] 3 PLC ± 0.25[.010] 4 PLC ± - ANGLES ± -	DWN S.URICH 25JAN01 CHK G.STEINHAUER 25JAN01 APVD G.STEINHAUER 25JAN01 PRODUCT SPEC APPLICATION SPEC WEIGHT -	TE Connectivity CONTACT BAND, MALE SIZE A2 CAGE CODE 00779 DRAWING NO 192007 RESTRICTED TO -
MATERIAL SEE TABLE	FINISH SEE TABLE	CUSTOMER DRAWING	SCALE NTS SHEET 1 OF 1 REV S